



*The new gold standard
for laboratory glassware.*



www.globescientific.com





The new gold standard for laboratory glassware.

Designed to meet the needs of the most demanding laboratory professionals, Globe Glass™ laboratory glassware sets the standard for performance and packaging in the glassware marketplace. Top quality borosilicate glass delivers outstanding strength, durability, and chemical resistance. Superior GlassGuard™ packaging has been engineered to ensure that Globe Glass™ products arrive at their destination intact and ready for use, each and every time. Globe Glass™ beakers, Erlenmeyer flasks, volumetric flasks, graduated cylinders, and media bottles are offered in sizes most commonly used in laboratories everywhere.





Globe Glass™ Gold Standards

Premium Raw Materials

Globe Glass™ laboratory glassware is made exclusively from ASTM E438, Type I, Class A, 3.3 borosilicate glass for excellent resistance to thermal shock and high chemical resistance to most acids, alkalis, and solvents.

ASTM Compliant Designs

Globe Glass™ laboratory glassware meets applicable ASTM standards for volume, shape, dimensions, graduation markings, and calibration. These ASTM standards are clearly marked for easy confirmation that each piece of Globe Glass™ laboratory glassware will meet the needs of laboratory professionals.

Precision Manufacturing

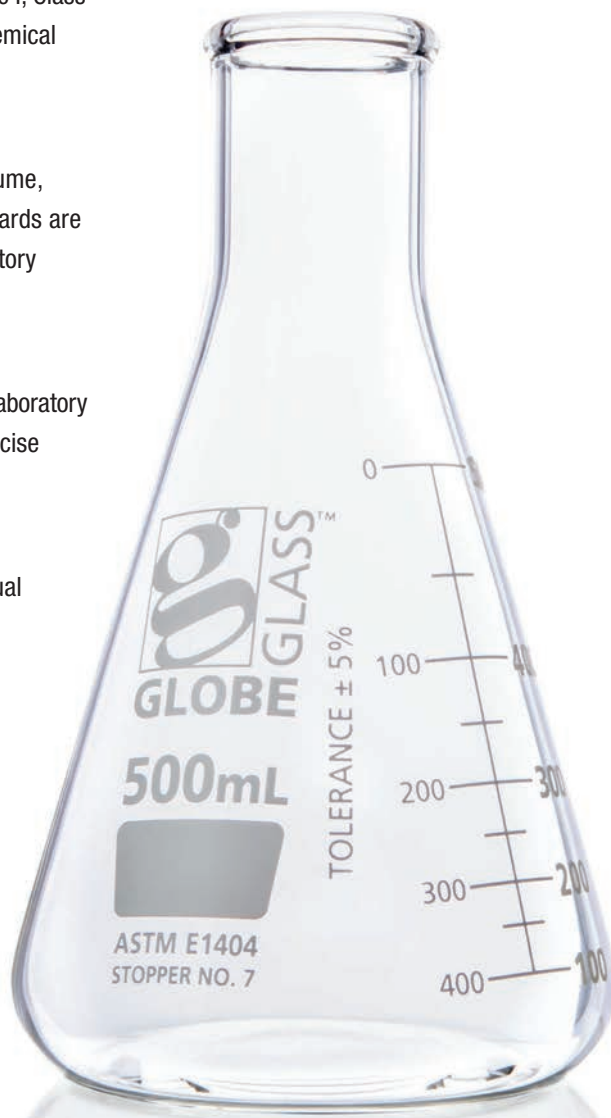
Computer controlled, automated production lines ensure that Globe Glass™ laboratory glassware has consistent wall thickness, flat bottoms free of striations, and precise forming of rims and spouts.

White Enamel Marking

Permanent white enamel markings are ASTM compliant and easy to read. Dual metric scale graduations are included on most items for easy reference while filling or dispensing. Most Globe Glass™ laboratory glassware items include a large, convenient marking area for coding or identification.

Quality Systems

Globe Glass™ laboratory glassware is manufactured under stringent quality controls. Manufacturing facilities are ISO 9001 certified and in-house calibration is performed in an ISO 17025 certified laboratory.

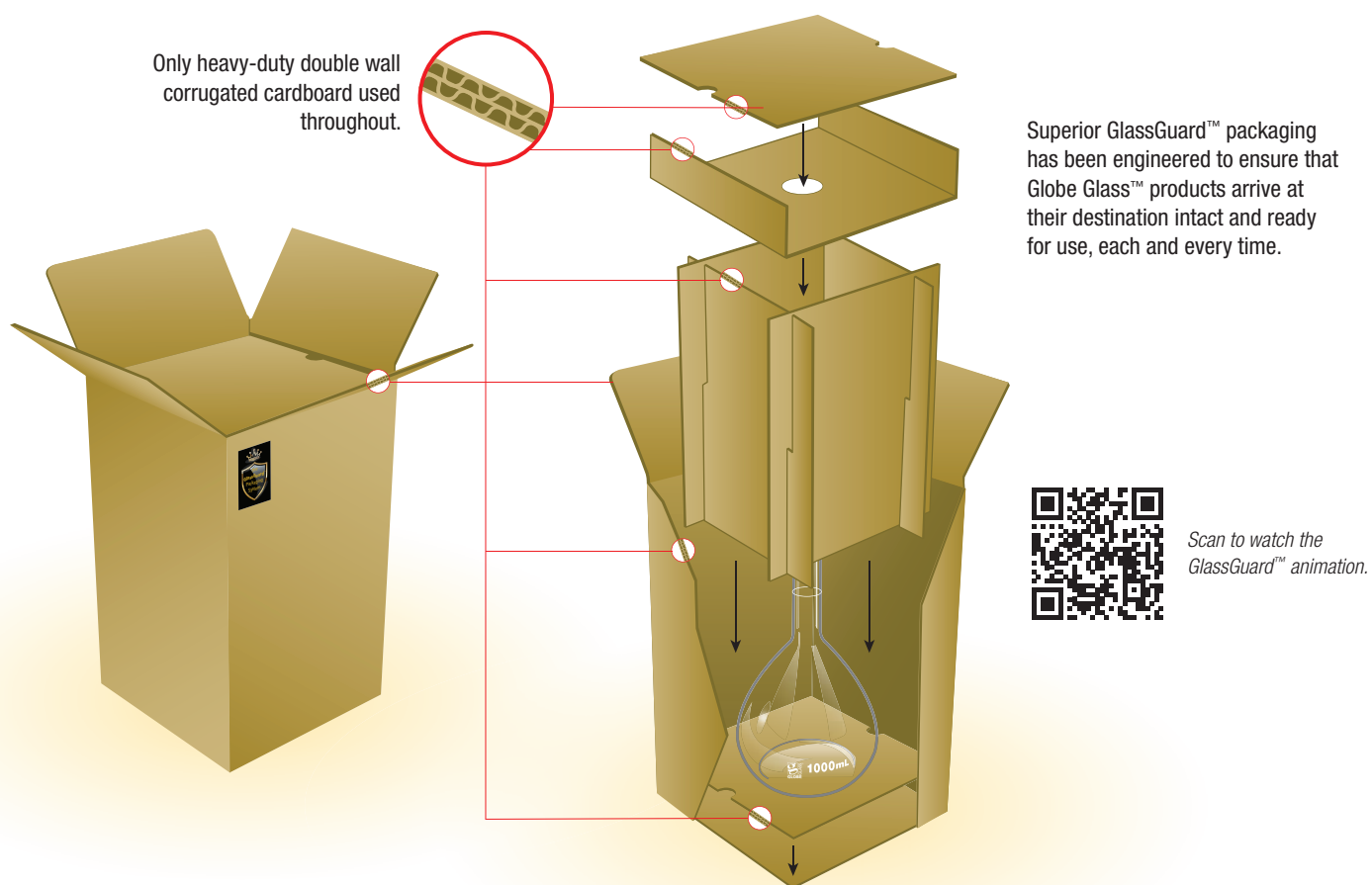




Exclusive GlassGuard™ Packaging System

Engineered to meet the hazards and rigors of transportation, GlassGuard™ packaging protects Globe Glass™ laboratory glassware during shipment. Robust packaging designs begin at the pack level and extend to the full case packaging. Heavy duty, multi-layered corrugated container systems meet rigid quality standards and testing protocols to provide exceptional protection from damage, even in the small parcel shipping environment.

Anatomy of a GlassGuard™ Package



Media Bottles

MEDIA BOTTLES

Globe Glass™ media bottles are designed with a wide mouth for ease of filling, dispensing, and pipetting. A drip-free pour ring and autoclavable polypropylene (PP) screw cap enable sterilizations of media and reagents. Globe Glass™ clear media bottles are available in sizes 50mL to 10000mL.

- ASTM E438, Type I, Class A, Borosilicate 3.3 Glass
- GlassGuard™ packaging system protects against transit damage
- GL32 polypropylene (PP) screw cap on size 50mL
- GL45 polypropylene (PP) screw caps on all other sizes
- Polypropylene (PP) pouring ring for drip-free liquid transfer
- High resistance to chemicals
- Dual scale metric graduations
- Durable white enamel printing
- Large white marking area

Amber Media Bottles

Globe Glass™ amber media bottles have all the same features as our standard media bottles while providing a great option for mixing, storing, and transport of light sensitive solutions and media. Available in sizes 50mL to 2000mL.

- Amber color reduces light transmission

Square Wide Mouth Media Bottles

Globe Glass™ square wide mouth media bottles are designed with an extra wide mouth for ease of filling, dispensing, and pipetting. The square shape improves storage and transport efficiency. A drip free pour ring and autoclavable polypropylene (PP) screw cap enable sterilization of media and reagents. Globe Glass™ square wide mouth media bottles are available in sizes 500mL, 1000mL, and 2000mL.

- ASTM E438, Type I, Class A, Borosilicate 3.3 Glass
- Square shape improves storage efficiency
- GL80 polypropylene (PP) screw caps
- Pouring ring for drip free liquid transfer
- High resistance to chemicals
- Single scale metric graduations
- Durable white enamel printing
- Large white marking area



All Globe Glass™ media bottles feature a polypropylene (PP) pouring ring for drip-free liquid transfer



8105000





8100500



8110500



8121000

Media Bottles

Item #	Capacity (mL)	Height* (mm)	Widest Outside Diameter (mm)	Graduation Interval (mL)	Graduation Range (mL)	Closure Size	Pack Qty	Case Qty
8100050	50	87	46	10	20 to 40	GL32	10	40
8100100	100	100	56	10	20 to 80	GL45	10	20
8100250	250	138	70	25	50 to 200	GL45	10	20
8100500	500	176	86	50	100 to 400	GL45	10	10
8101000	1000	225	101	50	100 to 900	GL45	10	10
8102000	2000	260	136	100	400 to 1800	GL45	10	10
8105000	5000	330	186	250	100 to 4500	GL45	1	1
810010K	10000	410	238	500	2000 to 9000	GL45	1	1

Amber Media Bottles

Item #	Capacity (mL)	Height* (mm)	Widest Outside Diameter (mm)	Graduation Interval (mL)	Graduation Range (mL)	Closure Size	Pack Qty	Case Qty
8110050	50	87	46	10	20 to 40	GL32	10	40
8110100	100	100	56	10	20 to 80	GL45	10	20
8110250	250	138	70	25	50 to 200	GL45	10	20
8110500	500	176	86	50	100 to 400	GL45	10	10
8111000	1000	225	101	50	100 to 900	GL45	10	10
8112000	2000	260	136	100	400 to 1800	GL45	10	10

Square Media Bottles

Item #	Capacity (mL)	Height* (mm)	Outside Dimensions (mm)	Graduation Interval (mL)	Graduation Range (mL)	Closure Size	Pack Qty	Case Qty
8120500	500	134	94 x 94 square	50	100 to 400	GL80	10	10
8121000	1000	180	105 x 105 square	50	100 to 900	GL80	10	10
8122000	2000	253	115 x 115 square	100	400 to 1800	GL80	10	10

*All heights are without cap.

Low Form Griffin Style Beakers

LOW FORM GRIFFIN STYLE BEAKERS

Uniform wall thickness, flat bottoms, and low expansion 3.3 Borosilicate glass make Globe Glass™ low form Griffin style beakers strong and durable with excellent resistance to thermal shock. Beaded rims and formed spouts facilitate accurate and steady pouring of liquids. Globe Glass™ low form Griffin style beakers are available in sizes from 10mL to 4000mL.

- ASTM E960 Type I Specifications
- GlassGuard™ packaging system protects against transit damage
- Formed pour spout for easy pouring
- High resistance to chemicals
- Uniform wall thickness
- Dual metric scale graduations
- Durable white enamel printing
- Large white marking area

Heavy Duty Low Form Griffin Style Beakers

The thicker walls of these heavy duty beakers improve mechanical strength to protect against breakage in the most rigorous uses. Globe Glass™ low form Griffin style beakers are available in sizes from 250mL to 4000mL.

- Meet ASTM E960 Type II Specifications
- Thicker walls protect against damage

Note: The heavy duty beakers are not recommended for use on hot plates



Low Form Griffin Style Beakers

Item #	Capacity (mL)	Height (mm)	Widest Outside Diameter (mm)	Graduation Interval (mL)	Graduation Range (mL)	Pack Qty	Case Qty
8010010	10	33	23	NA	NA	12	48
8010020	20	43	30	5	5 to 15	12	48
8010030	30	53	33	10	5 to 25	12	48
8010050	50	58	39	10	10 to 40	12	48
8010100	100	73	50	10	20 to 80	12	48
8010150	150	88	57	10	20 to 140	12	48
8010250	250	95	67	25	25 to 200	12	48
8010400	400	113	77	25	25 to 325	12	48
8010600	600	125	88	50	50 to 500	6	36
8010800	800	135	98	50	50 to 750	6	24
8011000	1000	157	108	50	50 to 1000	6	24
8012000	2000	188	130	100	200 to 1800	4	8
8014000	4000	250	161	250	500 to 3500	1	6

Heavy Duty Low Form Griffin Style Beakers

Item #	Capacity (mL)	Height (mm)	Widest Outside Diameter (mm)	Graduation Interval (mL)	Graduation Range (mL)	Pack Qty	Case Qty
8020250	250	95	67	25	25 to 200	12	48
8020400	400	113	77	25	25 to 325	12	48
8020600	600	125	88	50	50 to 500	6	36
8021000	1000	157	108	50	50 to 1000	6	24
8022000	2000	190	130	100	200 to 1800	4	8
8024000	4000	257	161	250	500 to 3500	1	4



GRADUATED CYLINDERS

Calibrated to ASTM E1272 standards, Globe Glass™ graduated cylinders measure precise volumes of liquids. A solid hexagonal base provides stability, and an included polyethylene (PE) bumper guard helps to protect against accidental breakage. Globe Glass™ graduated cylinders are calibrated TD "To Deliver" and are available in sizes 5mL to 2000mL with Class A or Class B calibration tolerance options. Class A graduated cylinders include a batch calibration report.

- Meet ASTM E1272 Style 1 Specification
- Calibrated TD – "To Deliver"
- Class A calibration tolerance for highest accuracy and the most critical laboratory work
- Class B calibration tolerance for general laboratory work
- GlassGuard™ packaging system protects against transit damage
- Pour spout for easy liquid transfer
- Beaded rim for strength and durability
- High resistance to chemicals
- Dual scale metric graduations
- Durable white enamel printing

8300010

8300250

8302000

Graduated Cylinders

Item #	Capacity (mL)	Tolerance (mL)	Graduation Interval (mL)	Height (mm)	Pack Qty	Case Qty
Calibration Class A						
8300005	5	0.05	0.1	113	1	6
8300010	10	0.1	0.1	137	1	6
8300025	25	0.17	0.2	167	1	6
8300050	50	0.25	1	195	1	6
8300100	100	0.5	1	257	1	6
8300250	250	1	2	330	1	4
8300500	500	2	5	385	1	4
8301000	1000	3	10	460	1	1
8302000	2000	6	20	565	1	1
Calibration Class B						
8330005	5	0.1	0.1	113	4	24
8330010	10	0.2	0.1	137	4	24
8330025	25	0.35	0.2	167	4	24
8330050	50	0.5	1	195	4	24
8330100	100	1	1	257	4	24
8330250	250	2	2	330	2	12
8330500	500	4	5	385	1	8
8331000	1000	6	10	460	1	4
8332000	2000	12	20	565	1	4

Volumetric Flasks

VOLUMETRIC FLASKS

Each Globe Glass™ volumetric flask is calibrated to meet ASTM tolerance specifications for precise measurement in solution preparation and dilution. A diamond etched graduation line indicates the calibrated capacity of each flask. Wide mouth options are available for easier filling and mixing. Globe Glass™ volumetric flasks are offered in sizes from 1mL to 2000mL and with Class A or Class B calibration tolerances. Class A volumetric flasks include a batch calibration report.

- Meet ASTM E288 Specification – Sizes 5mL to 2000mL
- Meet ASTM E237 Specification – Sizes 1mL and 2mL
- Calibrated TC – “To Contain”
- Class A calibration tolerance for highest accuracy and the most critical laboratory work
- Class B calibration tolerance for general laboratory work
- GlassGuard™ packaging system protects against transit damage
- Supplied with glass pennyhead stoppers
- Diamond etched graduation marks
- High resistance to chemicals
- Durable white enamel printing
- Large white marking area



8250025
Calibration Class B
volumetric flask



8230050
Wide mouth Calibration
Class A volumetric flask



8250500
Calibration Class B
volumetric flask





Class A standard
volumetric flasks available
in 12 sizes.



Class A wide mouth
volumetric flasks available
in 8 sizes.



Class B standard
volumetric flasks available
in 9 sizes.

Volumetric Flasks

Item #	Capacity (mL)	Tolerance (mL)	Height Without Stopper (mm)	Outside Diameter (mm)	Stopper Size	Pack Qty	Case Qty
Calibration Class A							
8200001	1	0.01	65	13	8	6	12
8200002	2	0.02	70	17	8	6	12
8200005	5	0.02	70	22	9	6	12
8200010	10	0.02	90	28	9	6	12
8200025	25	0.03	110	40	9	6	12
8200050	50	0.05	140	50	9	6	12
8200100	100	0.08	170	60	13	6	12
8200200	200	0.10	210	75	16	6	12
8200250	250	0.12	220	80	16	6	12
8200500	500	0.20	260	100	19	6	12
8201000	1000	0.30	300	125	22	1	6
8202000	2000	0.50	370	160	27	1	4
Calibration Class A — WIDE MOUTH							
8230005	5	0.08	70	22	13	6	12
8230010	10	0.08	90	28	13	6	12
8230020	20	0.08	110	40	13	6	12
8230025	25	0.08	110	40	13	6	12
8230050	50	0.08	130	52	13	6	12
8230100	100	0.10	160	63	16	6	12
8230200	200	0.20	200	76	19	6	12
8230250	250	0.20	225	82	19	6	12
Calibration Class B							
8250010	10	0.04	90	28	9	6	12
8250025	25	0.06	110	40	9	6	12
8250050	50	0.10	140	50	9	6	12
8250100	100	0.16	170	60	13	6	12
8250200	200	0.20	210	75	16	6	12
8250250	250	0.24	220	80	16	6	12
8250500	500	0.40	260	100	19	6	12
8251000	1000	0.60	300	125	22	1	6
8252000	2000	1.00	370	160	27	1	4

Erlenmeyer Flasks

ERLENMEYER FLASKS

Globe Glass™ Erlenmeyer flasks meet ASTM E1404 specifications for narrow mouth, wide mouth and screw cap options and are available in a wide range of sizes. Wide mouth flasks allow easy access to contents, while screw cap flasks include a GL45 cap with a PTFE liner for a leak resistant closure. Globe Glass™ narrow and wide mouth Erlenmeyer flasks are designed with reinforced, beaded rims for strength and resistance to chipping.

- Meet ASTM E1404 Specifications
- GlassGuard™ packaging system protects against transit damage
- High resistance to chemicals
- Uniform wall thickness
- Reinforced beaded rims to resist chipping*
- PTFE lined GL 45 polypropylene (PP) screw cap **
- Dual metric scale graduations *
- Single metric scale graduations**
- Durable white enamel printing
- Large white marking area

*Narrow, wide mouth and heavy duty options

**Screw cap options

Heavy Duty Erlenmeyer Flasks

Globe Glass™ heavy duty Erlenmeyer flasks meet ASTM E1406 specifications. Thick, heavy-duty walls improve mechanical strength and allow use in filtering applications not requiring side tubulation. Globe Glass™ heavy duty Erlenmeyer flasks are designed with reinforced, beaded rims for strength and resistance to chipping.

- Meet ASTM E1406, Type I Specifications
- Thicker walls protect against damage
- High resistance to chemicals
- Uniform wall thickness



8420250
Screw cap
Erlenmeyer flask



8402000
Erlenmeyer flask



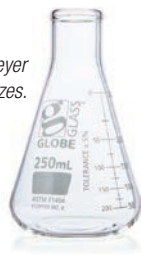
8410250
Wide mouth
Erlenmeyer flask



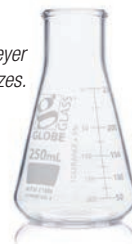
8430500
Heavy duty
Erlenmeyer flask



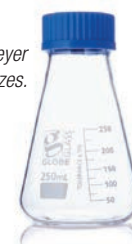
Narrow mouth Erlenmeyer
flasks available in 8 sizes.



Wide mouth Erlenmeyer
flasks available in 4 sizes.



Screw cap Erlenmeyer
flasks available in 4 sizes.



Erlenmeyer Flasks

Item #	Capacity (mL)	Height* (mm)	Widest Outside Diameter (mm)	Graduation Interval (mL)	Graduation Range (mL)	Rubber Stopper Size	Pack Qty	Case Qty
Narrow Mouth								
8400025	25	65	40	5	10 to 25	0	12	48
8400050	50	81	50	10	20 to 50	1	12	48
8400125	125	115	67	25	50 to 125	5	12	48
8400250	250	136	82	25	50 to 250	6	12	48
8400300	300	144	88	25	50 to 300	6	12	48
8400500	500	178	103	50	100 to 500	7	6	36
8401000	1000	219	128	50	250 to 1000	9	6	24
8402000	2000	280	164	100	600 to 2000	10	4	8
Wide Mouth								
8410125	125	115	67	25	50 to 125	6	12	48
8410250	250	136	82	25	50 to 250	8	12	48
8410500	500	103	103	50	100 to 500	10	6	36
8411000	1000	128	128	50	250 to 1000	11	6	24
Screw Cap								
						Closure Size		
8420250	250	140	85	25	50 to 250	GL45	6	12
8420500	500	175	105	50	100 to 500	GL45	6	6
8421000	1000	220	131	50	250 to 1000	GL45	4	4
8422000	2000	280	166	100	600 to 2000	GL45	1	2

*Height is without cap.

Heavy duty Erlenmeyer
flasks available in 5 sizes.



Heavy Duty Erlenmeyer Flasks

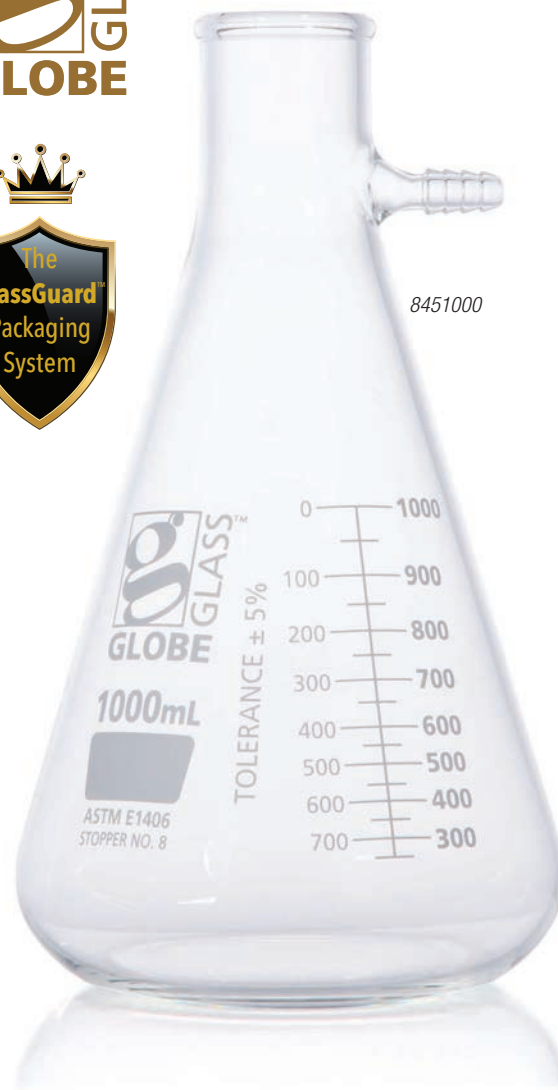
Item #	Capacity (mL)	Height (mm)	Widest Outside Diameter (mm)	Graduation Interval (mL)	Graduation Range (mL)	Rubber Stopper Size	Pack Qty	Case Qty
8430250	250	158	84	25	50 to 250	6	6	18
8430500	500	188	106	50	100 to 500	7	1	6
8431000	1000	240	136	50	250 to 1000	8	1	6
8432000	2000	290	165	100	600 to 2000	9	1	12
8434000	4000	360	205	250	1000 to 4000	12	1	6

Filter Flasks

FILTER FLASKS

Globe Glass™ filter flasks meet ASTM E1406 specifications. Thick, heavy-duty walls provide the mechanical strength necessary for filtering operations. Flasks have side tubulation for connection to 7mm-8mm flexible tubing. Globe Glass™ filter flasks are designed with reinforced, beaded rims for strength and resistance to chipping.

- Meet ASTM E1406, Type II, Class I Specifications
- GlassGuard™ packaging system protects against transit damage
- Thick walls for mechanical strength
- Side tubulation connects to 7mm-8mm flexible tubing
- High resistance to chemicals
- Uniform wall thickness
- Reinforced beaded rims to resist chipping
- Dual metric scale graduations
- Durable white enamel printing
- Large white marking area



Filter Flasks

Item #	Capacity (mL)	Height (mm)	Widest Outside Diameter (mm)	Graduation Interval (mL)	Graduation Range (mL)	Rubber Stopper Size	Pack Qty	Case Qty
8450025	25	75	40	5	10 to 25	3	6	18
8450050	50	83	51	10	20 to 50	4	6	18
8450125	125	113	71	25	50 to 125	5	6	18
8450250	250	158	84	25	50 to 250	6	6	18
8450500	500	188	106	50	100 to 500	7	6	18
8451000	1000	242	135	50	250 to 1000	8	6	12
8452000	2000	288	165	100	600 to 2000	9	1	1
8454000	4000	360	205	50	1000 to 4000	12	1	1



REUSABLE SEROLOGICAL PIPETTES

Globe Glass™ serological pipettes measure and dispense specific volumes of liquid and are calibrated to ASTM E1044 standards. Globe Glass™ reusable serological pipettes are calibrated TD “To Deliver” and must be blown out to deliver the full capacity. Colored bands simplify volume identifications and amber enameled graduations are bold and easy to read. Globe Glass™ serological pipets are available in sizes 0.1mL to 25mL and in Class A or Class B calibration tolerance options. Class A serological pipets include a batch calibration report.

- Meet ASTM E1044 Style I specifications
- GlassGuard™ packaging system protects against transit damage
- Calibrated TD – “To Deliver”
- Class A calibration tolerance for highest accuracy and the most critical laboratory work
- Class B calibration tolerance for general laboratory work
- High resistance to chemicals
- Reusable and autoclavable
- Color coded for simple volume identification



Serological Pipettes - Class A

Item #	Capacity (mL)	Color	Length (mm)	Tolerance (mL)	Graduation Interval (mL)	Graduation Range (mL)	Pack Qty	Case Qty
8500001	1	Red	360	0.01	0.1	0 to 0.9	6	12
8500001A	1	Yellow	360	0.01	0.01	0 to 0.95	6	12
8500002	2	Green	360	0.01	0.1	0 to 1.9	6	12
8500005	5	Blue	360	0.02	0.1	0 to 4.5	6	12
8500010	10	Orange	360	0.03	0.1	0 to 9.5	6	12
8500025	25	White	450	0.05	0.1	0 to 24	6	12

Serological Pipettes - Class B

Item #	Capacity (mL)	Color	Length (mm)	Tolerance (mL)	Graduation Interval (mL)	Graduation Range (mL)	Pack Qty	Case Qty
8510000	0.1	White	360	0.005	0.01	0 to 0.09	6	12
8510000A	0.2	Black	360	0.008	0.01	0 to 0.19	6	12
8510001	1	Red	360	0.02	0.1	0 to 0.9	6	12
8510001A	1	Yellow	360	0.02	0.01	0 to 0.95	6	12
8510002	2	Green	360	0.02	0.1	0 to 1.9	6	12
8510005	5	Blue	360	0.04	0.1	0 to 4.5	6	12
8510010	10	Orange	360	0.06	0.1	0 to 9.5	6	12
8510025	25	White	450	0.1	0.1	0 to 24	6	12



Technical Information

Globe Glass™ glassware is made exclusively from ASTM E438, Type I, Class A, 3.3 borosilicate glass. Low coefficient of thermal expansion provides exceptional resistance to thermal shock. The glass has chemical resistance to most acids, alkalis, and solvents.

Chemical Composition – Globe Glass™ raw material is a low alkali borosilicate glass typically composed of 81% SiO₂, 13% B₂O₃, and 4% Na₂O.

Thermal Properties:

- Coefficient of Linear Expansion: $32.5 \times 10^{-7} \text{ cm/cm/}^{\circ}\text{C}$
- Strain Point: 515°C
- Annealing Point: 565°C
- Softening Point: 820°C
- Specific Heat: 0.2
- Thermal Conductivity: 0.0027 Cal/cm³/°C/Sec

Chemical Resistance – Globe Glass™ borosilicate glass is highly resistant to water, neutral and acid solutions, concentrated acids and their solutions, as well as bromine, chlorine, iodine, and organic matter. Only hydrofluoric acid, very hot phosphoric acid, and alkaline solutions attack the glass.

Optical Properties – Globe Glass™ laboratory glassware appears colorless and shows no noticeable absorption of light in the visible spectrum.



www.globescientific.com

Phone 1 (800) 394-4562 • 1 (201) 599-1400
Fax 1 (201) 599-1406
E-mail mail@globescientific.com